

EMERALD MEADOWS

Welcome to Emerald Meadows! Spacious and meticulously maintained 2bd, 2.5bath upper unit terrace home. Open concept main level includes a dining room and a living room space with an accented fireplace. Eat-in kitchen area boasts extra cupboard storage and lots of counter space. Each master bedroom has a 4 piece ensuite bathroom. The property was thoughtfully upgraded for convenience and style. Window nook (bedroom) and two balconies on each floor to enjoy. This beautiful home is ready to live in! Steps to Crownridge park playground and tennis courts, public transit, skating rink, soccer field, schools and shopping



Oksana Shevchenko

BROKER

M.Sc, B.A (Hons), MCNE-Master
Certified Negotiation Expert

Direct 613-700-9007

oksana.ottawa@gmail.com

www.oksanaottawa.ca



ROYAL LEPAGE TEAM REALTY

Independently owned & operated, Brokerage

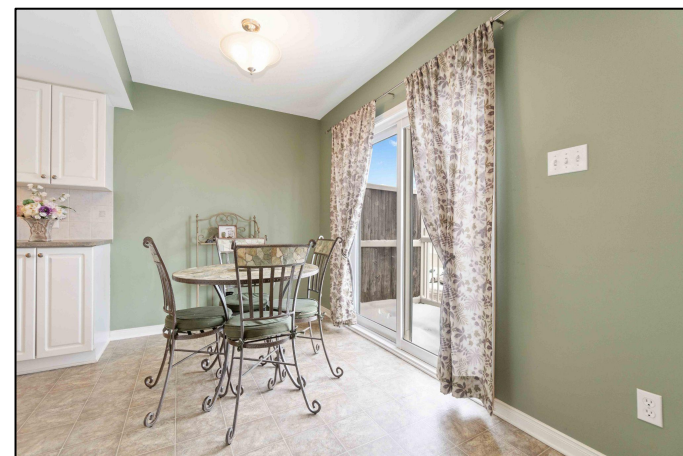
The information contained herein is believed to be accurate but is not warranted.



EMERALD MEADOWS

UPGRADES & INCLUSIONS

- Freshly painted in 2022 with accented portions
- New carpets top to bottom 2022
- Roof 2015
- Balcony surface 2015
- A/C 2019
- Fireplace in living room
- Large mirror on main level at the top of the entrance stairs.
- Kitchen table with 4 chairs.
- Additional white, tall cupboards in the eat-in kitchen.
- Three decorative shelves, image frame on the wall, and extendable double sided mirror in the main level powder room.
- Over John bathroom storage cabinets in both second level bathrooms.
- Small shelf in a laundry room.
- Remote control for light upstairs.
- All blinds and rods, including kitchen patio door curtains.
- Dishwasher, Dryer, Hood Fan, Microwave, Refrigerator, Stove, Washer



ROYAL LEPAGE

MASTER SALES

AWARD 2020

ROYAL LEPAGE

SALES ACHIEVEMENT

AWARD 2018

ROYAL LEPAGE
Team Realty
Independently Owned and Operated Brokerage

ADDITIONAL INFORMATION

Year Built: 2005 approx	Style/Type: Condo
Condo Fees: \$301.00	Nearby park with playground and tennis courts
Taxes: \$2416/2021 (Approx.)	Parking: #53

Oksana Shevchenko | Sales Representative | Direct 613-700-9007 | office 613-725-1171 | oksana.ottawa@gmail.com

The information contained herein is believed to be accurate but is not warranted.